

Annual Conference, Foxlease 2011



Outputs from Discussion Groups

These notes are produced as accurately as possible from the flip charts; I have, however, tried to group similar points together.

Where comments have clearly been added by someone other than the original author I have included them [in square brackets].

Programme Support – District / County Allocation

District Support to Groups:

- Mentoring section leaders / improving programmes
- Informal group support
- Special needs [@ District support]
- Facilitate sharing of knowledge and experience
- Moving on!
- Programme planning support
- Skills training for leaders [with County facilitation]
- Camping skills – control, monitor and develop standards
- Gaining outside qualifications
- Specialist roles and being proactive in them
- Explorer / Network skills training
- Involving young leaders in programme – ie relevant events

Fuzzy – District or County Support to Groups:

- Specialist activities requiring a permit
- Progressive training programme [duplicated]
- Operate / manage Nights Away system (County led – District operated?)
- Scouts.org training
- D of E / QSA (NB needs further work stream)

County Support to Groups:

- Queens Scout Award Panel / Support
- Award Recognition Event
- County list of minibuses [not needed]
- County skills database
- Camping Skills – set standards
- International (see Danny)
- Special needs – County facilitated [duplicated]

County Support to Districts:

- Special Needs
- Outside qualifications – (training)
- Specialist activities
- Network co-ordination [? at district level]
- Standards – nights away / training / Young Leader scheme
- QSA / D of E
- Training / mentoring

Youth Events – District / County Allocation

District Support to Groups:

- Badge days
- Gang shows
- Swimming galas, currently run events etc
- Beaver and Cub days
- Facilitate nights away events
- Linking events cub to scout / scout to ES
- Section challenges
- MESH
- International Events
- Event passport for YL
- Bag packing award

Fuzzy – District or County Support to Groups:

- D of E / Explorer Belt Expeditions
- Young Leader events
- Scout Band / Orchestra
- Hikes foresters etc
- Youth Award presentations and ceremonies

County Support to Groups:

- Once every 4 years will offer an international experience for out YP
- Jamboree / Camp Downe / promote attendance at national events
- County show
- Air and Water events
- “Big Gig” style events
- Spandango

County Support to Districts:

- DCC Youth Events ?
- Specialised support as required from advisers
- SAS teams as required
- Someone with an overall view of all events to prevent duplication

Management Support – District / County Allocation

District Support to Groups:

- Personal support to GSL and Group Chairman
- Support development planning
- Assistance to GSL in managing programme issues
- Personal support to Group Secretaries and Treasurers
- Firefighting support to GECs
- Provision of support via SAS

District and County Support to Groups:

- Support to GSL in implementing TSA policies [County implemented]
- Safeguarding issues support and advice
- Safeguarding adviser support [move from District]
- Adult recruitment advice and support
- Maintain list of advisers
- Waiting lists
- Fundraising support / opportunities
- Scout-friendly trade[r]s list
- Network

County Support to Groups

- Adult training provision support and validation [moved from both]
- Support for young leader training [moved from both]
- GSL / leader days – social support
- Legislation / POR changes / updates
- University & college recruitment

County Support to Districts:

- DEC support
- Safeguarding Adviser / Training
- Special Needs – access & dealing with
- Overall support via training at County and local level (appropriate and relevant)

Governance Support – District / County Allocation

District Support to Groups:

- Appointment process followed for Group Trustees
- General advice and training for Trustees
- Treasurer advice and management
- Working with outside organisations [moved from County]
- Ensuring Group [governance] compliance with POR [moved from both]
- Ensure Sponsorship Agreements up to date
- Liaison with neighbouring boroughs
- Nights Away administration
- Local scout shops
- Badge secretary

District and County Support to Groups:

- Network / Explorer / SAS finances and governance [can be both]
- Branding new Districts [Designed County Approved]
- Ensure Accounts comply with Charity Commission and TSA requirements
- Adult Appointment Committees [moved from both to County – then back again]

County Support to Groups:

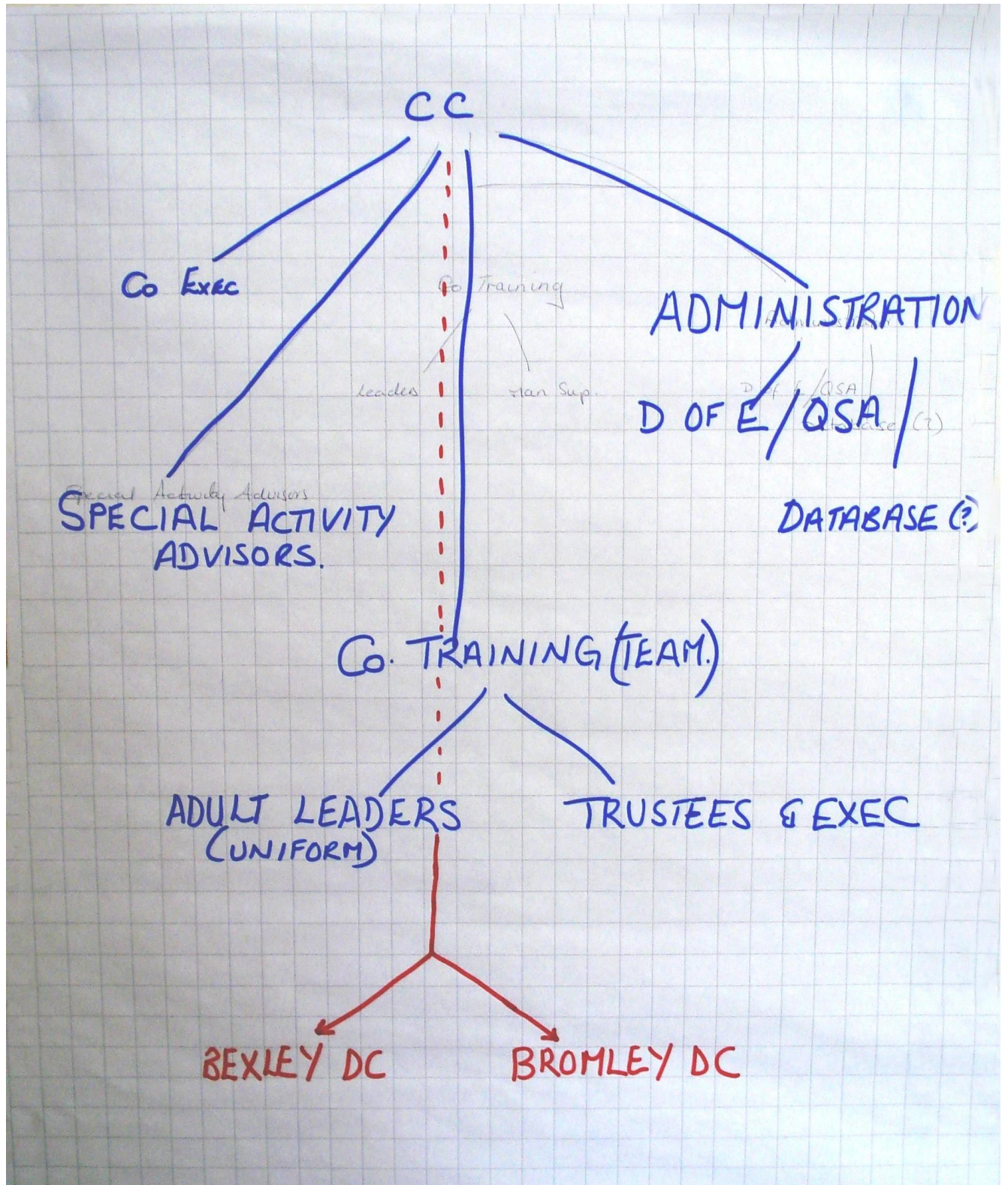
- Provision of camping facilities management
- Web badge shop

County Support to Districts:

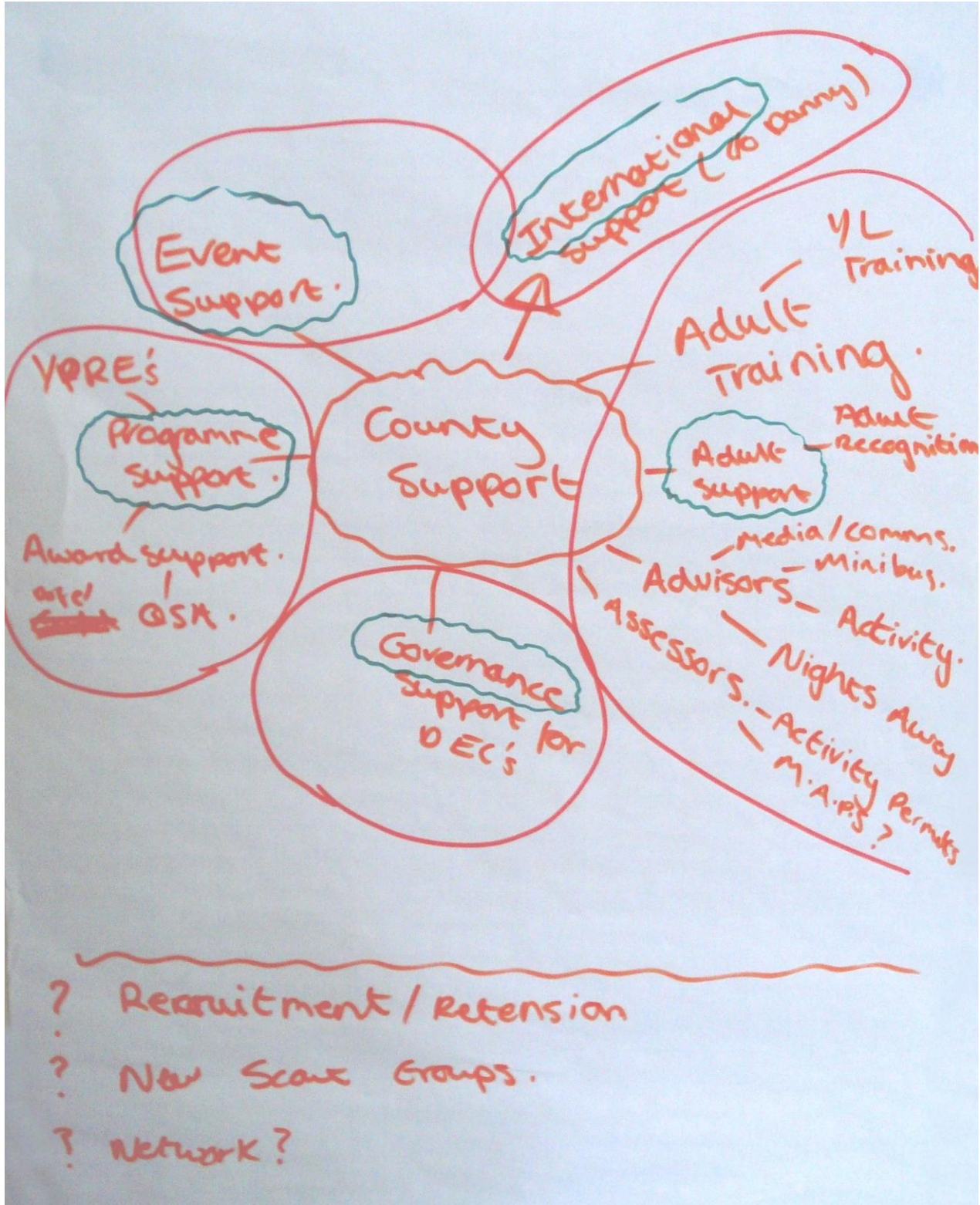
- County training required for Administrators and build a database of all Trustees
- Co-ordination for large companies – central point of contact covering both boroughs
- Web badge shop and standardisation of suppliers for District badges [do not need]
- Information about changes and updates (POR / legislation)

Possible Groupings of County Functions:

Option 1:



Option 2:



Option 3:

