

Bromley Scouts Development Day – 12 March 2011

Outputs from Discussion Groups

1 Scope of District Functions

1.1 Programme Group:

Modifications to ADC (Programme) draft brief (highlighted):

Assistant District Commissioner (Programme)

Responsible for: District Scouters and/or Advisers

Responsible to: Deputy District Commissioner (Programme)

Key Relationships:

Internal: County Programme Team, District Team, GSLs, Local Training Manager, District Administrators

External: PR, Press, Special Needs

Key Function:

Working as part of a District Team to support the delivery of the Scout programme within Groups and monitor the quality of the scouting offered.

Specific Functions:

1. ensure regular visits to sectional meetings (as allocated by DC / DDC)Programme) to identify additional support needs [Note: this description allows for local decision making to allocate members of the District Programme Team to different meetings so they could, for example, be allocated on either a geographical or sectional basis]
2. provide advice to sectional leaders on improving balanced programmes
3. assist the GSL in monitoring the implementation of the policies of the Scout Association
4. promote (clarification needed that this means promote in sense of “facilitate” rather than “advertise”) additional activities at District level as required by Groups to augment the sectional programmes
5. as a member of the District Team contribute to the development of Scouting generally in the District
6. liaison with CTM / LTM for training where programme deficiencies identified
7. Relationship with SAS for programme support

Comments on “unallocated function” list:

- SAS – relationship needed with ADC(Programme)
- Representing scouting externally – not a programme role but needs liaison with ADC(Programme)

1.2 Management Group:

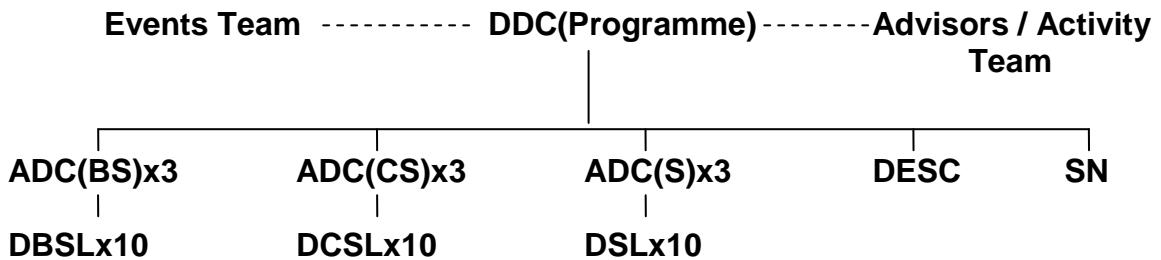
No feedback

1.3 Governance Group

No feedback

2 Possible Structures

2.1 Programme Group:



- each District Scouter looks after 4/5 Groups
- 3 x ADC needed each section as not all Scouts can travel from one side of the Borough to the other
- District Scouters work closely with Groups so we know what leaders can offer to Borough activities (badge days etc) and know scouts

What do we want team to provide?

BS enhance programme:
New ideas
Sleepovers
Badge Days
Events

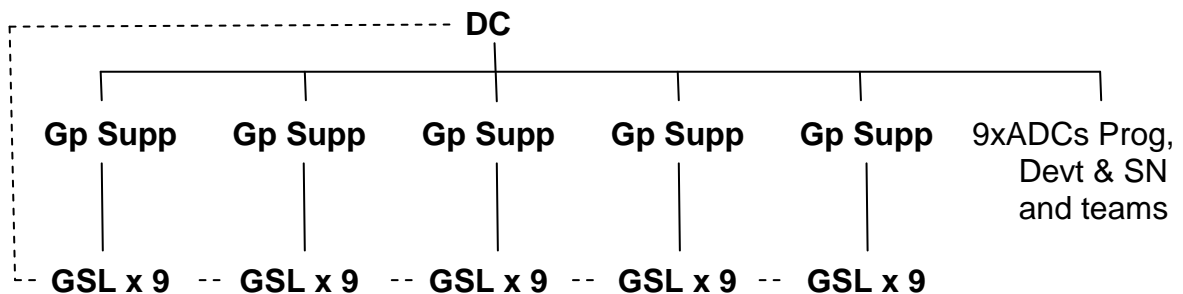
Support – Help! I’m stuck
- confidence

CS as BS plus:
Outdoor skills (basics)
Sixer / second camps
Links to scouts
Sharing resource and communications
Skills teams
Co-ordinating those with NGB qualifications / activity
authorisations etc

Scouts as above plus:
Bigger events (sharing resources)
Outdoor skills (intermediate)
Canoe / climbing / caving
Competitions

ES as above plus:
Retention of existing ESU structure
D of E & QSA
Young leaders’ events and training

2.2 Management Group:



Notes:

- Suggested that LTMs align with Group Support people
- All paperwork between Group and District to go via Group Support

2.3 Governance Group

3 First Steps / Quick Wins

3.1 Programme Group:

- Joint meetings BS/CS/S/ES across Districts
- Joint camps
- Joint District events
- Joint fishing competition(S / ES / CS?)
- Joint tag rugby
- District contacts - Groups

3.2 Management Group:

- Notice to GSLs re meeting at St James (plenty of notice) 1st Petts Wood
- Circular to go out before regarding topics to be discussed and further questions to be addressed in writing before meeting.
- Notice to GSLs re what is expected from new District:
 - What we want from our line managers (ADCs)
 - What the District will be called
 - Structure of the District
 - First drink on the new DC

3.3 Governance Group

4 Possible District Name

4.1 Programme Group:

BOB
BSD
BS
BOB's

4.2 Management Group:

Had several ideas but none disclosed.

4.3 Governance Group

Bromley